



Spredway®

Owner's Installation & Operation Manual

Sukup Manufacturing Co.

1555 255th Street, Box 677

Sheffield, Iowa, USA 50475-0677

Phone: 641-892-4222

Fax: 641-892-4629

Website: www.sukup.com

E-mail: info@sukup.com

| <u>DATE</u> | <u>REVISION</u> | <u>PAGE</u> |
|-------------|--|-------------|
| 12/05/2025 | – Updated warranty | 3 |
| | Updated safety pages as needed | 4-6 |
| | Updated Contact Information page | 16 |

TABLE OF CONTENTS

Proper management is essential to ensure satisfactory performance. Sukup Manufacturing Co. is not liable for damage to grain resulting from improper management during drying or storage.

| | |
|--|----|
| Limited Warranty..... | 3 |
| Safety Section..... | 4 |
| Assembly..... | 7 |
| Installation | 8 |
| Operation..... | 10 |
| Troubleshooting Guide..... | 10 |
| Specifications | 11 |
| Wiring | 11 |
| Optional Pre-Spread Funnel | 11 |
| Parts/Assemblies..... | 12 |
| Standard and High Capacity Spreadway – Galvanized (G01051) | 12 |
| Super High Capacity Spreadway – Galvanized (G0250)..... | 14 |
| Contact Information | 16 |



Sukup Manufacturing Co.

PO Box 677 Sheffield, IA USA 50475

Phone: 641-892-4222 Fax: 641-892-4629

E-mail: Info@sukup.com Visit us at: www.sukup.com

GRAIN HANDLING & MATERIAL HANDLING LIMITED WARRANTY

SUKUP MANUFACTURING CO. (Sukup) warrants to original retail purchaser that within time limits set forth, new equipment shall be free from defects in material and workmanship. A part will not be considered defective if it substantially fulfills performance specifications, including, but not limited to, parts with cosmetic (appearance) issues that will not affect life of product. Should any part prove defective within warranty period, part will be replaced or repaired without charge F.O.B. Sukup Manufacturing Co., Sheffield, Iowa USA or Distribution Centers - Arcola, Illinois; Aurora, Nebraska; Cameron, Missouri; Defiance, Ohio; Jonesboro, Arkansas; Watertown, South Dakota. To claim warranty, a copy of original invoice is required.

THE FOREGOING LIMITED WARRANTY IS EXCLUSIVE AND IN LIEU OF ALL OTHER WARRANTIES OF MERCHANTABILITY, FITNESS FOR PARTICULAR PURPOSE AND OF ANY OTHER TYPE, WHETHER EXPRESS OR IMPLIED. Sukup neither assumes nor authorizes anyone to assume for it any other obligation or liability in connection with said part, and will not be liable for incidental or consequential damages. THE REMEDIES STATED HEREIN SHALL BE THE EXCLUSIVE REMEDIES AVAILABLE UNDER THIS LIMITED WARRANTY.

Sukup reserves the right to change specifications, add improvements or discontinue manufacture of any of its equipment without notice or obligation to purchasers of its equipment. This warranty gives you specific legal rights. You may also have other rights which vary according to state or province.

WARRANTY EXCLUSIONS - Labor, transportation, or any cost related to a service call is not provided by Sukup. This Limited Warranty does not apply to damage resulting from misuse, neglect, normal wear, accident or improper installation or maintenance. ITEMS NOT MANUFACTURED BY SUKUP (e.g. tires, belts, motors) ARE COVERED UNDER WARRANTIES OF THEIR RESPECTIVE MANUFACTURERS AND ARE EXCLUDED FROM COVERAGE UNDER THE SUKUP WARRANTY. Since the stirring down augers are so critical to the successful operation of the stirring machine, Sukup Manufacturing Co. will not warranty any machines unless they are equipped with Sukup down augers. SUKUP MANUFACTURING CO. MAKES NO WARRANTY, EXPRESS OR IMPLIED, WITH RESPECT TO DOWN AUGERS LONGER THAN 20', INCLUDING, WITHOUT LIMITATION, ANY WARRANTY OF MERCHANTABILITY AND WARRANTY OF FITNESS FOR A PARTICULAR PURPOSE.

Upon taking delivery of product, purchaser (dealer and/or end user) assumes responsibility for proper storage of all materials. Proper storage includes dry, temperature and humidity-controlled facilities, which eliminate the potential of moisture, including condensation, from causing white rust and/or corrosion of any sort. Warranty does not extend to defects, damage or cosmetic (appearance) issues caused by improper storage, handling or erection.

BASIC WARRANTY - All Sukup manufactured products are warranted for one year from date of purchase. Part(s) must be returned to Sukup within 30 days in event of failure.

EXTENDED STIRRING MACHINE WARRANTY - Sukup warrants stirring machines for two years from date of purchase.

EXTENDED STIRRING AUGER WARRANTY - Sukup warrants stirring down augers for two years from date of purchase. Must return top 18" of down auger to obtain credit.

EXTENDED FAN WARRANTY - Sukup warrants fans for two years from date of purchase.

EXTENDED HEATER CIRCUIT BOARD WARRANTY - Sukup warrants heater circuit boards for three years from date of purchase. Rebuilt circuit boards are warranted for one year from date of purchase.

EXTENDED MATERIAL HANDLING WARRANTY - Sukup warrants Material Handling equipment, excluding structural support systems, for two years from date of purchase.

REPLACEMENT PARTS WARRANTY PERIOD - Sukup warrants replacement parts (e.g. belts, sensors, rotating contacts, gearmotors, switches) purchased from Sukup for one (1) full drying season following purchase.

ELECTRIC MOTOR WARRANTY - Manufacturers of electric motors warranty them for at least 1 year from installation date or 2 years from motor manufacture date. Process for repairing or replacing motor depends on motor manufacturer and horsepower. Contact motor manufacturer for terms. If motor warranty is refused, use the following procedure: Have motor repair shop fill out the warranty report form as if they were providing warranty service. State on report reason for refusal. Send report, motor nameplate, and proof of purchase date (invoice from Sukup and invoice for your customer) to Sukup. Sukup will attempt to obtain warranty from motor manufacturer. Any credit obtained will be passed on. Warranty may also be obtained by returning motor to Sukup Manufacturing Co. or Distribution Center with prior authorization. **NOTE:** Sukup will not be responsible for unauthorized motor replacement or repair. Labor for removal of motor not included.

WARRANTY CERTIFICATION - Warranty must be registered within one month of product shipment from Sukup facility or customer pickup from the facility to certify warranty coverage. See QR code on back page of product manual for details.

UNAPPROVED PARTS OR MODIFICATION - All obligations of Sukup under this warranty are terminated if equipment is modified or altered in any way not approved by Sukup or if parts that do not conform to specifications of original parts are used.

Safety



Read manual before installing or using product. Failure to follow instructions and safety precautions in manual can result in death or serious injury. Keep manual in a safe location for future reference.



On safety decals, this symbol and the signal words Danger, Warning, Caution and Notice draw your attention to important instructions regarding safety.

They indicate potential hazards and levels of intensity.



RED - DANGER indicates an imminently hazardous situation which, if not avoided, will result in death or serious injury.



ORANGE - WARNING indicates a potentially hazardous situation which, if not avoided, could result in death or serious injury.



YELLOW - CAUTION indicates a potentially hazardous situation which, if not avoided, may result in minor or moderate injury.



BLUE - NOTICE alerts you to practices unrelated to personal injury, such as messages related to property damage.

IMPORTANT: To prevent serious injury or death to you or your family, it is essential that safety decals are clearly visible, in good condition, and applied to the appropriate equipment.

FOLLOW MANUAL & SAFETY DECAL MESSAGES

Carefully read this manual and all safety decals on your equipment.

Safety decals must be kept in good condition. Replace missing or damaged safety decals by contacting Sukup Manufacturing Co. via mail at PO Box 677, Sheffield, Iowa USA, 50475; by phone at 641-892-4222; or by e-mail at info@sukup.com.



It is the responsibility of the owner/operator to know what specific requirements, precautions, and work hazards exist. It is also the responsibility of the owner/operator to inform anyone operating or working in the area of this equipment of hazards and safety precautions that need to be taken to avoid personal injury or death. Always keep children away from bins and vehicles with flowing grain.

Make no unauthorized modifications to machine. Modifications may endanger function and/or safety of unit. Keep unit in good working condition.

Keep shields in place. Replace worn or missing shields free of charge by contacting Sukup Manufacturing Co.

GRAIN BIN SAFETY

Owners/operators are responsible for developing site-specific confined space entry procedures. OSHA's confined space entry procedures (29CFR 1910.146) can be found at www.osha.gov.

If you must enter bin for repair or maintenance:

- Use a safety harness, safety line and respirator
- Station another person outside of bin
- Avoid the center of the bin
- Wear appropriate personal protective equipment
- Keep clear of all augers and moving parts



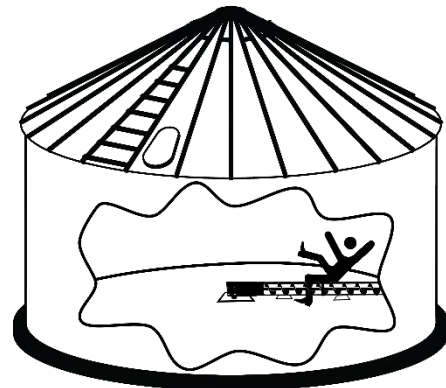
DANGER: Never enter bin unless all power is locked out and another person is present.



Unload equipment can kill or dismember!

NEVER enter bin when sweep is running!

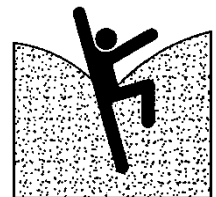
When bin is nearly empty, sweep may speed up. Keep away from sweep and sumps to avoid entanglement.



Failure to follow precautions above will result in death or serious injury.



DANGER: Flowing grain may trap and suffocate. If you enter a bin of flowing grain you can be completely submerged in grain in about 8 seconds.



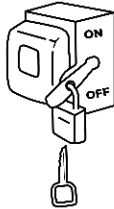
Failure to heed this warning will result in death or serious injury.

Safety

To avoid electric shock or electrocution, all equipment must be properly wired and grounded according to electrical codes. Have unit wired by qualified electrician.



Have an electrician install a main power disconnect switch capable of being locked only in OFF position. Mark disconnect clearly as to equipment it operates.



Always lock out main power disconnect switch whenever equipment is not in use.



WARNING: When servicing equipment, never enter bin unless all power is locked out and another person is present. Always **LOCK OUT** all power and always check with voltage meter before servicing. Failure to do so could result in death or serious injury.

Owners/operators are responsible for developing site-specific Lockout/Tagout procedures based on equipment at their work site. See OSHA's typical minimal lockout procedures (29CFR 1910.147 App A) at www.osha.gov.



WARNING: KEEP CLEAR OF ALL MOVING PARTS.

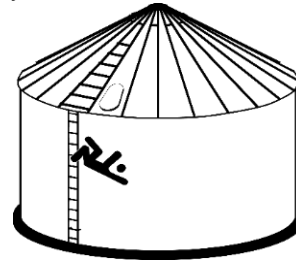
Keep people (ESPECIALLY YOUTH) away from equipment, particularly during operation.

Keep away from all moving parts. Keep all shields in place. **SHUT OFF AND LOCK OUT** all power before servicing.

Failure to follow precautions above could result in death or serious injury.



WARNING: Metal is slippery when wet. To avoid falls, never carry items if climbing on bin. Maintain secure hand and foothold if climbing on bin. Failure to do so could result in death or serious injury.



CAUTION: Metal edges are sharp. To avoid injury, wear protective clothing and handle equipment and parts with care. Failure to do so may result in minor or moderate injury.

PERSONAL PROTECTIVE EQUIPMENT



Owners/Operators are responsible for developing site-specific personal protective equipment standards. OSHA's personal protective equipment standards (29CFR 1910.132) can be found at www.osha.gov.

EMERGENCIES – KNOW WHAT TO DO

Have emergency numbers and written directions to work site readily available in case of emergency. An area for emergency phone numbers to be recorded is provided below and at end of this manual.

Ambulance • Fire • Police: 9-1-1

Bin rescue team: _____

Emergency medical squad: _____

Address of work site: _____

Directions to work site: _____

Safety

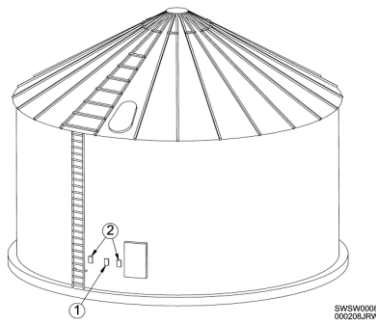
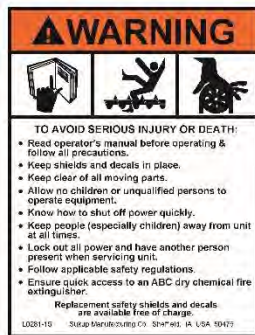
Safety decals should be mounted on your equipment as shown in this safety section. Yearly and prior to equipment use, check that all decals and shields are in place and legible.

To order a replacement decal or shield at no charge, contact your dealer or Sukup Manufacturing Co., Box 677, Sheffield, IA USA 50475. If replacement is necessary, make sure location for decal is free from grease, oil and dirt. Remove backing from decal and place in proper position.

Decals 1 and 2 must be mounted during installation. Decal 3 is mounted at factory.

IMPORTANT: If a suggested location is not clearly visible, place decal in a more suitable place. Never cover up an existing safety decal.

- 1. DECAL L0281 – WARNING:** To avoid serious injury or death. **Mount this decal** on bin sheet near door handle.



- 2. DECAL L0258A – DANGER:** Do not enter this bin! Keep clear of all augers. **Mount this decal** on bin sheet near door handle and near ladder leading to roof.



- 3. DECAL L0284 – WARNING:** Keep away from all moving parts. Decal is factory-mounted on motor.



ASSEMBLY

Read all instructions carefully before beginning. Spreadway model number is printed on Spreadway shipping carton. Standard Spreadways are marked "Spreadway." High Capacity Spreadways are marked "High Capacity." Assemble Spreadway according to drawings on this page and following instructions.

1. Bolt motor to motor mount using four 5/16 x 1" bolts, nuts and lock washers. Align motor pulley to flat pulley by sliding on motor shaft. **NOTE:** Align belt when Spreadway is in operating position.

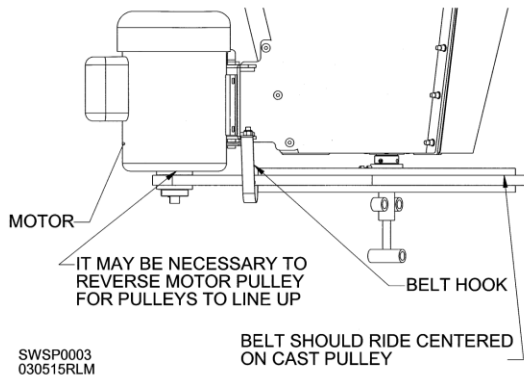


Fig. 1 – Placement of belt on pulleys

2. Place belt on pulleys. Bend belt hook around belt as shown. **CAUTION:** Belt should not scrape on hook or it may cut belt.
3. Center flow holes in spreading pans should be about 1/3 open for bins less than 24' in diameter. For larger bins, holes should be 1/2 open. Be sure bolt on cover is tight after adjustment.
4. To mount pan to spreader, lower pitch adjusting rod by loosening locking handle and pre-spread disc inside of cone. Lower adjusting rod so its end is about 3" below main bearing shaft. See Fig. 2. One end of stationary pitch control arm comes mounted to pan. Mount other end of control arm to main bearing shaft. Secure with hairpin clips. Repeat this step for second pan.

5. Remove hinge pin from adjusting rod. Place spreading pans and pitch adjusting rod together and replace hinge pin. Secure hinge pin with hairpin clip. Hairpin clips should be snapped on all the way. See Fig. 2. See operating instructions for setting angle of pans.

6. Place pre-spread ring inside cone, allowing slots in ring to slip over Spreadway arms. Secure ring by installing hairpin clips - found in parts sack - through holes provided in Spreadway arms.

7. After Spreadway has been assembled it is ready to be installed in bin. Following figures show different ways to mount Spreadway. Determine which applies and follow instructions for that method. Spreadway is shipped with a set of standard rigid mount brackets.

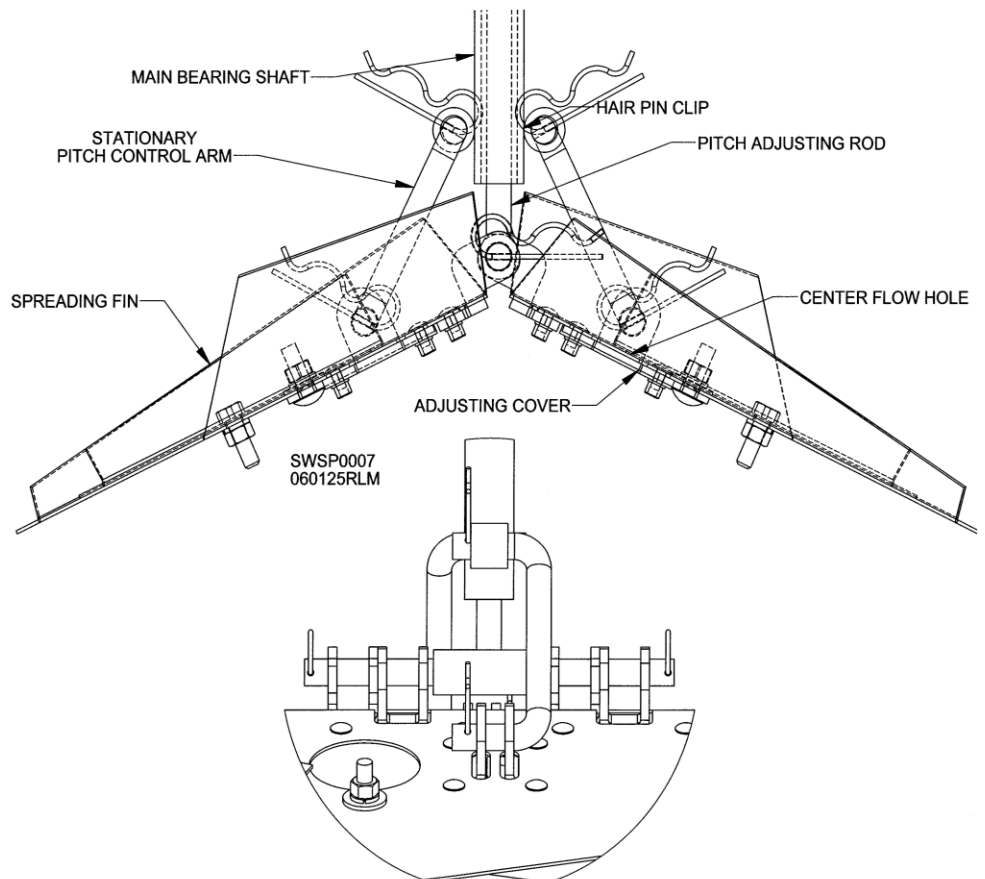


Fig. 2 – Mounting pans to spreader

INSTALLATION

Hanger Brackets

Standard and High-Capacity with Rigid Mount

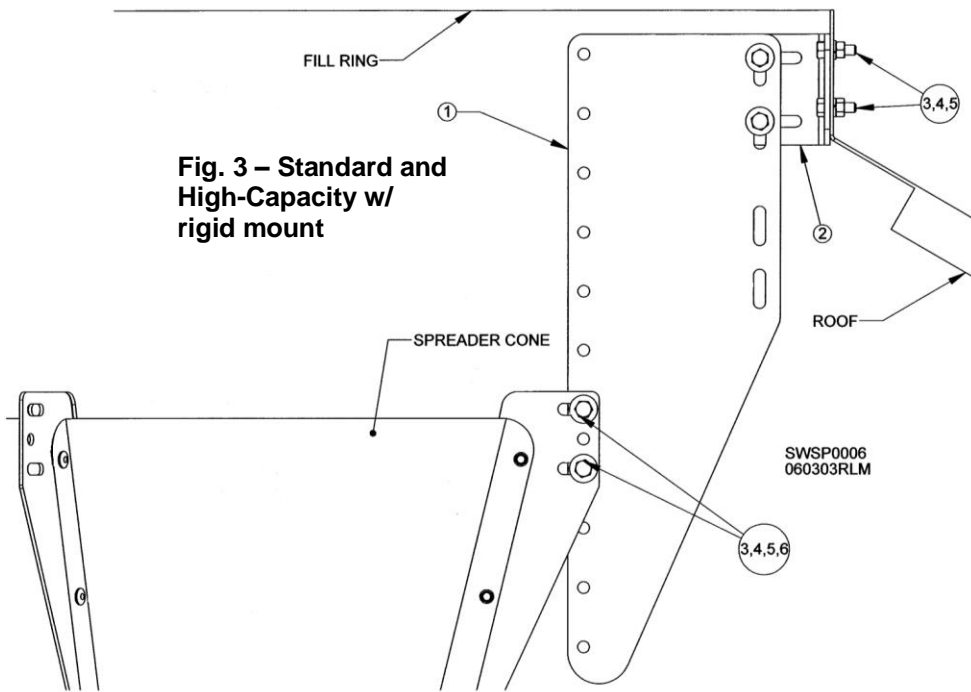


Fig. 3 – Standard and High-Capacity w/ rigid mount

1. Divide circumferences of center fill ring into three equal parts. Position brackets so Spredway will be level. If holes are provided in peak ring, Steps 1 and 2 may be eliminated.
2. Mark and drill 5/16" holes. Bolt brackets into place.
3. Holes have been provided in rigid mount hanger brackets to allow for multiple Spredway positions. Bolt Spredway to brackets using 5/16 x 1" bolts. Ensure Spredway is level.

| REF # | DESCRIPTION | QTY. | PART # |
|-------|-------------------------------|-------|--------|
| 1 | Rigid hanger (3) | 1 set | G0197A |
| 2 | Peak ring bracket (Rigid) (3) | 1 set | G0196A |
| 3 | Bolt, 5/16 - 18 x 1" | 18 | J0527 |
| 4 | Lock washer, 5/16" | 18 | J1200 |
| 5 | Hex nut, 5/16" - 18 | 18 | J1002 |
| 6 | Flat washer, 5/16" | 18 | J1111 |

Super High-Capacity

1. Divide circumferences of center fill ring into three (3) equal parts. Position brackets so Spredway will be level.
2. Mark and drill 5/16" holes. Bolt brackets into place.
3. Place hangers into slots on Spredway cone straps and lower Spredway into opening*. Place hangers into slots on brackets bolted to fill ring. Ensure Spredway is level.

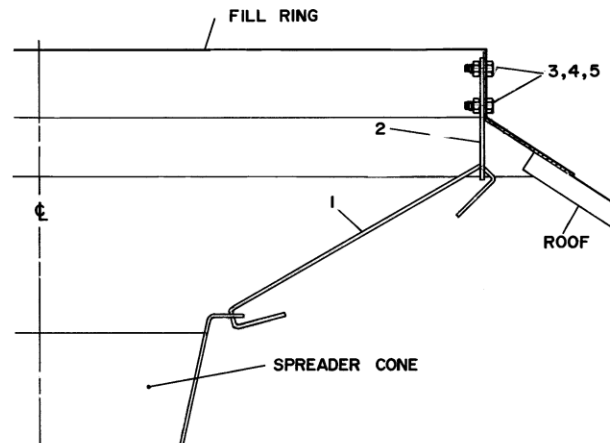


Fig. 4 – Super High-Capacity

*If bin's fill ring is too small for Spredway to fit through, use a winch to raise it from inside of bin.

Installation

Sioux

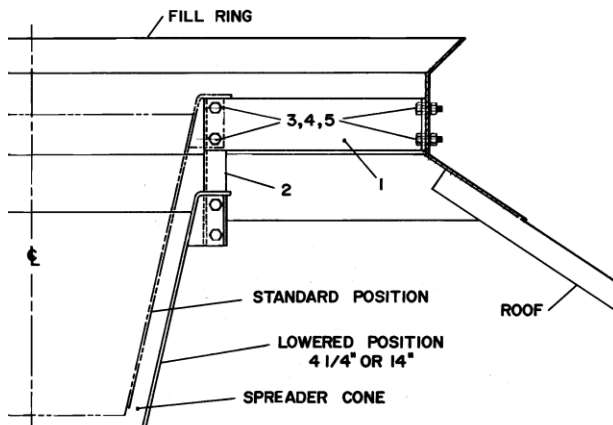


Fig. 5 – Sioux bracket

*If bin's fill ring is too small for Spredway to fit through, use a winch to raise it from inside of bin.

1. Bolt Sioux brackets to Spredway cone straps with 5/16" bolts.
2. Lower Spredway into fill ring*. Ensure Spredway is level. Mark and drill 5/16" holes. Bolt Spredway into place.
3. Use optional vertical brackets if required. If pre-spread funnel is used, use longer vertical brackets. See Fig. 5.

| REF. # | DESCRIPTION | QTY. | PART # |
|--------|------------------------------|-------|--------|
| 1 | Sioux bracket (3) | 1 set | G0130A |
| 2 | Vertical bracket 7" long (3) | 1 set | G0132A |
| | " " 18" long (3) | 1 set | G0137A |
| 3 | Bolt, 5/16 - 18 x 1" | 12-18 | J0527 |
| 4 | Lock washer, 5/16" | 12-18 | J1200 |
| 5 | Nut, 5/16" – 18 | 12-18 | J1002 |

MFS

1. Bolt brackets to Spredway cone straps with 5/16" bolts.
2. Lower assembled Spredway into opening*. Level Spredway. Mark and drill 5/16" holes for mounting bolts. Bolt brackets to fill ring.
3. Use optional vertical brackets if required. If pre-spread funnel is used, use longer vertical brackets. See table below.

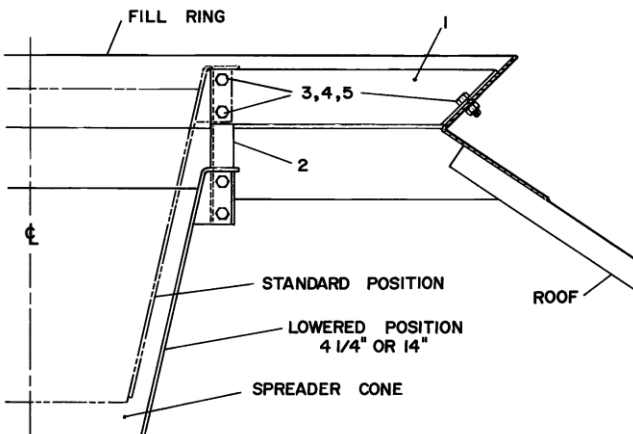


Fig. 6 – MFS bracket

*If bin's fill ring is too small for Spredway to fit through, use a winch to raise it from inside of bin.

| REF. # | DESCRIPTION | QTY. | PART # |
|--------|-------------------------------|-------|--------|
| 1 | MFS bracket, 32" (3) | 1 set | G0126A |
| | MFS bracket, 40" (3) | 1 set | G0127A |
| | MFS bracket, 60" (3) | 1 set | G0128A |
| 2 | Vertical bracket, 7" Long (3) | 1 set | G0132A |
| | " " 18" Long | 1 set | G0137A |
| 3 | Bolt, 5/16 - 18 x 1" | 9-15 | J0527 |
| 4 | Lock washer, 5/16" | 9-15 | J1200 |
| 5 | Nut, 5/16" – 18 | 9-15 | J1002 |

OPERATION

Proper pitch of spreading pans is the key to spreading grain evenly in bin. Pitch may easily be adjusted from top of spreader by rotating pre-spread disc. See Fig. 7.

NOTE: Spreadway adjustment wrenches, Kit G01671, are available from Sukup Manufacturing Co.

Maximum capacity for Standard Spreadway is 3,000 bushels per hour and for High Capacity is 5,000 bph and for Super High capacity is 7,000 bph.

TO ADJUST SPREADING PATTERN:

Loosen locking handle and rotate pre-spread disc to change pitch of spreading pans. Begin with spreading pans in level position. Rotate pre-spread disc clockwise to tilt pans downward.

NOTE: Change in pitch may not be noticeable unless weight is applied to pans. Falling grain will keep pans in correct position during operation. Lock handle against disc.

IMPORTANT: Optimum pitch of spreading pans depends on diameter of bin and amount of grain flowing through spreader. Adjust so bulk of grain hits bin wall about one ring down from eave. To obtain best results, pitch of spreading pans may require adjustment after initial operation.

Center flow holes (see Fig. 2) control amount of grain that falls in center of bin. If grain is too high in center, rotate cover to make opening smaller. If grain is too low in center, rotate cover to make opening larger.

Pre-spread ring is designed to allow for multiple capacity rates. Knockouts on ring can be easily removed to increase rates. Proper settings are essential for peak performance. See Fig. 7 and use table below as a guide. Ring sizes and flow rates generally correspond to fill auger/spout diameters.

| RING SIZE | RATE OF FLOW |
|-----------|--------------|
| 6" | 1,500 bu/hr |
| 8" | 2,600 bu/hr |
| 10" | 4,000 bu/hr |

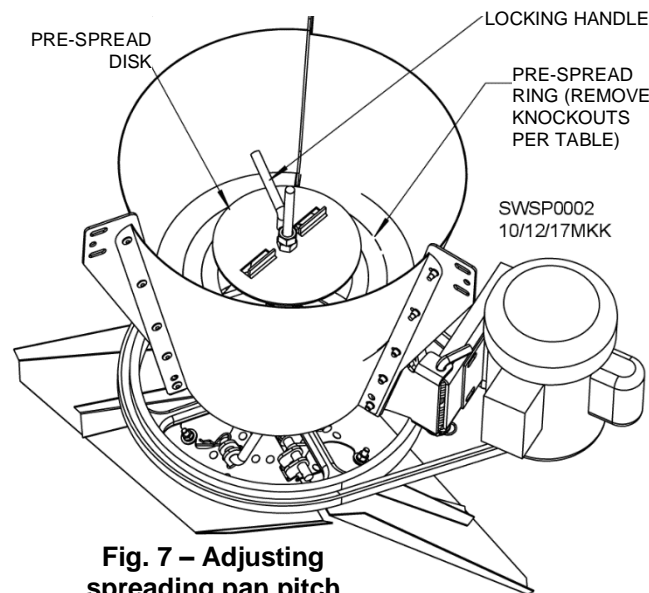


Fig. 7 – Adjusting spreading pan pitch

IMPORTANT: Grain flow must be centered over pre-spread disc for even spreading.

IMPORTANT: When looking from top down, make sure spreader is turning counterclockwise.



WARNING: Disconnect power before adjusting Spreadway after installation. Contact with rotating pans could cause death or serious injury.

TROUBLESHOOTING

| PROBLEM | REASON | SOLUTION |
|--------------------------------|---|--|
| 1. Does not run. | Fuses blown. | Replace fuses. |
| | Belt off. | Replace belt. |
| 2. Belt comes off flat pulley. | Motor pulley not aligned w/flat pulley. | Align pulley. |
| | Motor mount bent. | Replace motor mount. |
| | Pitch rod is bent. | Replace bent parts. |
| | Belt not tight. | Replace spring & check belt size. |
| 3. Spreading unevenly. | Spreader not adjusted properly. | Adjust spreading pans. |
| | Spreadway not level. | Level unit. |
| | Incoming grain spout not centered over pre-spread disc. | Move & secure grain spout over center of pre-spread disc or use a pre-spread funnel. |
| 4. Vibration | Spreadway improperly or insecurely mounted. | Ensure proper brackets are used. Tighten bolts. |

SPECIFICATIONS

| | STANDARD | HIGH CAPACITY | SUPER HIGH CAPACITY |
|-----------------------------|------------------------|-----------------------|------------------------|
| CAPACITY - BU/HR | Up to 3000 | 3000 - 5000 | 5000 - 7000 |
| MOTOR SIZE | 1/2 HP | 3/4 HP | 1-1/2 HP |
| FRAME SIZE | H48Z (1PH) / D56 (3PH) | E56 (1PH) / D56 (3PH) | G56H (1PH) / E56 (3PH) |
| SHAFT SIZE | 5/8" | 5/8" | 5/8" |
| DUTY CYCLE | Continuous | Continuous | Continuous |
| BELT SIZE | A56 | BX57 | BX57 |
| MOTOR PULLEY DIA. | 1-3/4" | 2-1/4" | 2-1/4" |
| PRE-SPREAD DISC DIA. | 3-1/2" | 3-1/2" | 8" |
| SPREADER PAN STYLE | Split-hinged | Split-hinged | Split-hinged |
| CONE | 19" x 12" | 19" x 12" | 19" x 13" |
| BIN DIAMETER | 18' - 33' | 24' - 48' | 36' - 60' |

WIRING

Provide heavy-duty wiring to Spredway motor. Follow applicable electrical codes. Operating voltages for Spredway motors are listed below.

| MOTOR TYPE | FACTORY PRE-WIRED VOLTAGE | ALTERNATIVE VOLTAGE* |
|-------------|---------------------------|----------------------|
| 1/2hp 1ph | 115 volts | ----- |
| 1/2hp 3ph | 230 volts | 460 volts |
| 3/4hp 1ph | 115 volts | 230 volts |
| 3/4hp 3ph | 230 volts | 230 volts |
| 1-1/2hp 1ph | 230 volts | ----- |
| 1-1/2hp 3ph | 230 volts | 460 volts |

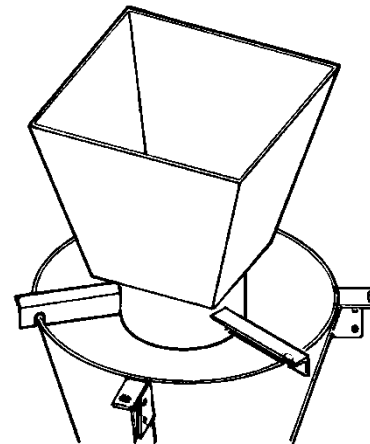
* Consult motor nameplate or electrical box cover as to connections needed for using alternative voltage.

OPTIONAL PRE-SPREAD FUNNEL

Uneven spreading can occur if transport auger is not centered over grain spreader.

A pre-spread funnel is available. It drops grain into center for more level spreading.

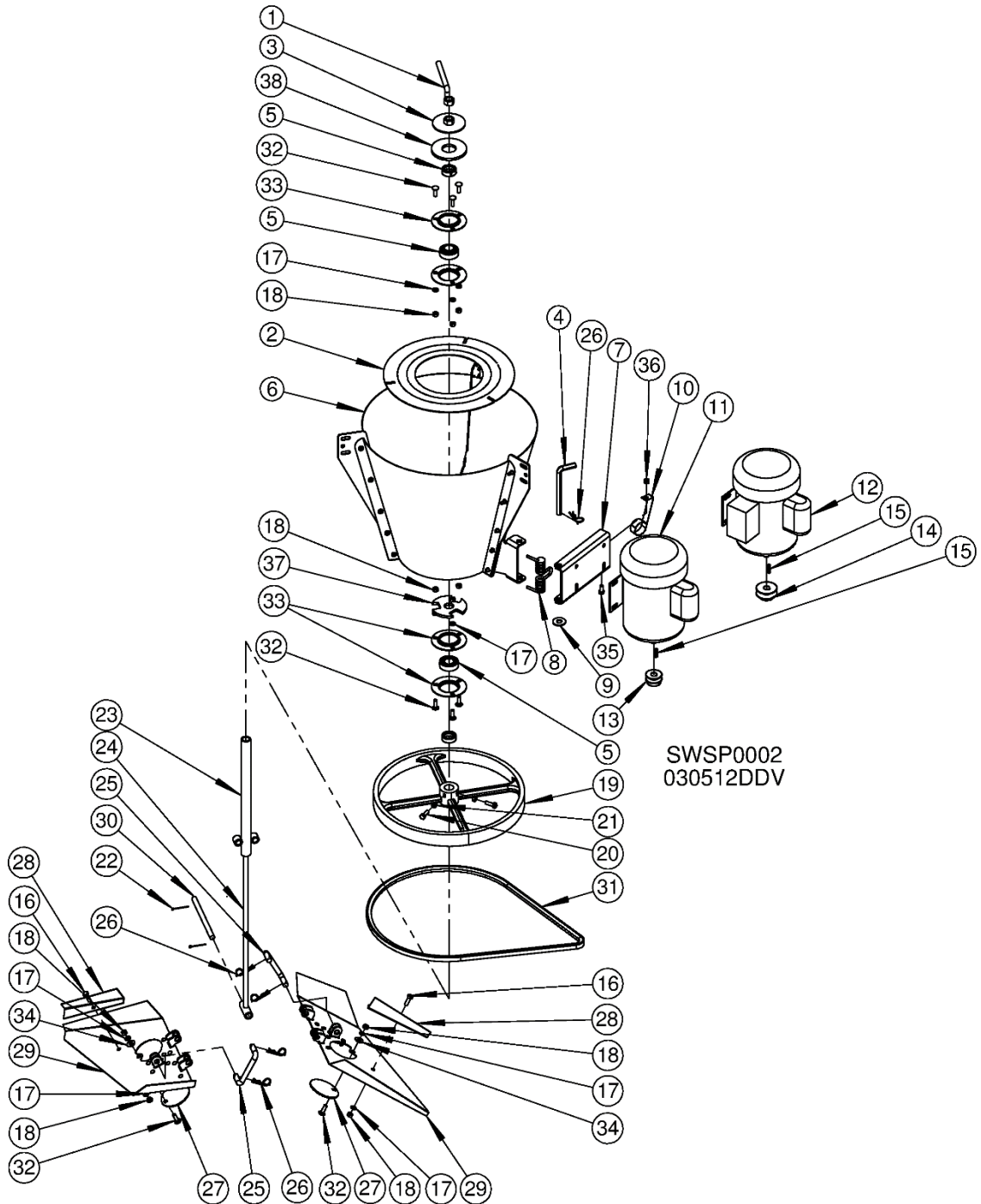
Fig. 8 – Pre-spread funnel



| PRE-SPREAD FUNNEL | |
|-------------------|--------|
| AUGER SIZE | PART # |
| 12" | G0175 |
| 10" | G0155 |
| 8" | G0136 |
| 6" | G0154 |

PARTS/ASSEMBLIES

Standard and High Capacity Spredway – Galvanized (G01051)



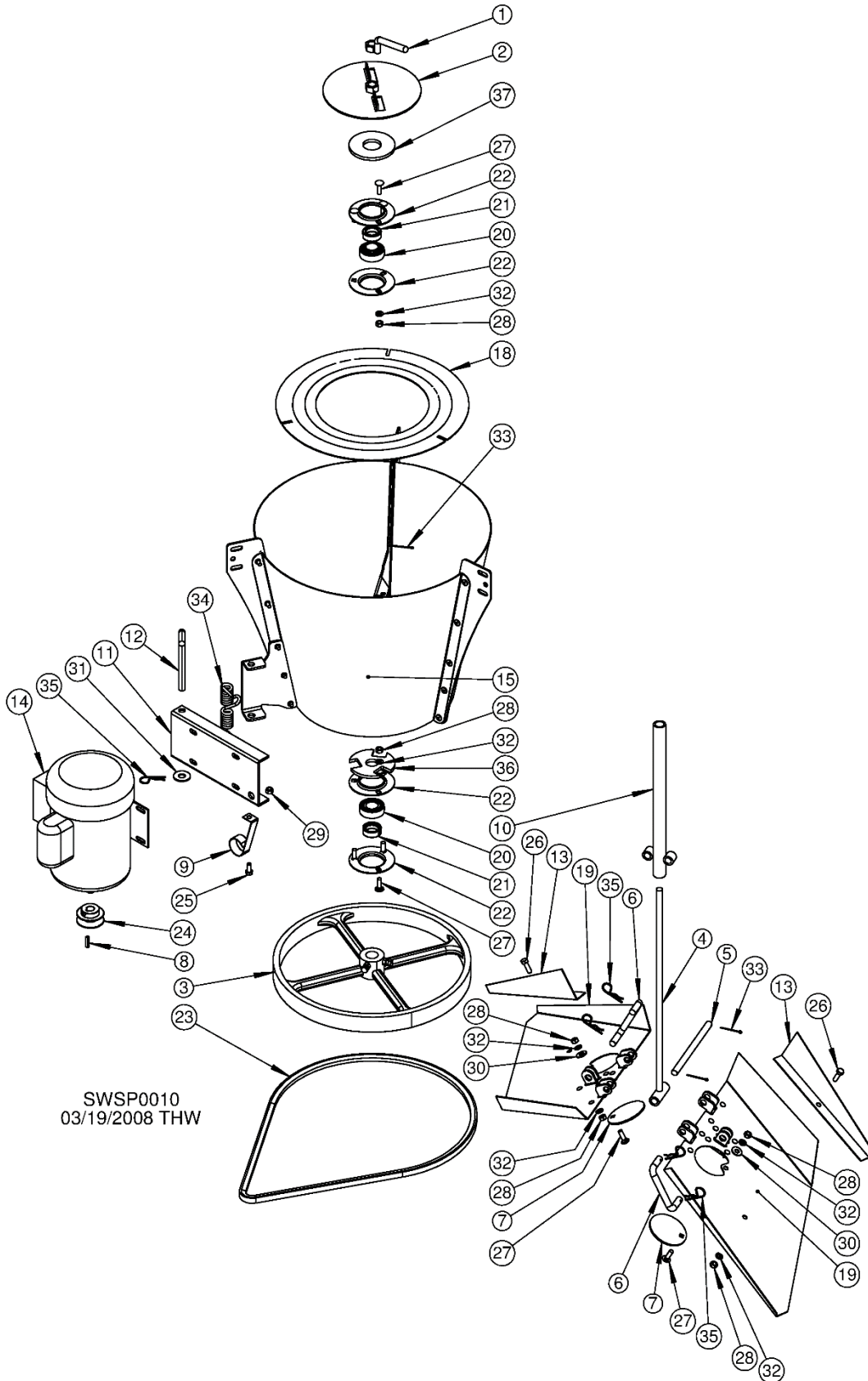
Parts/Assemblies

Standard and High Capacity Spredway – Galvanized (G01051), Parts List

All parts except those designated as “Standard” or “High Capacity” are interchangeable between Standard and High Capacity spreaders.

| REF. # | DESCRIPTION | QTY. | PART # |
|--------|--|------|----------|
| 1 | Locking handle | 1 | G0112 |
| 2 | Pre-spread ring w/ knockouts | 1 | G0182 |
| 3 | Pre-spread disc, 3-1/2" | 1 | G0111 |
| 4 | Pivot pin | 1 | G0265 |
| 5 | 1" center bearing, FH205-16 ag seal w/ lock collar | 2 | J00058 |
| 6 | Cone | 1 | G0145 |
| 7 | Motor mount | 1 | G01455 |
| 8 | Double torsion spring | 1 | J2371 |
| 9 | Flat washer, 1/2" (Optional) | | J1125 |
| 10 | Belt hook | 1 | G0153 |
| 11 | Motor, .5hp 1ph 115V, Standard | | G0138 |
| | Motor, .5hp 3ph 230V, Standard | | G0140 |
| | Motor, .5hp 3ph 440V, Standard | | G0146 |
| 12 | Motor, .75hp 1ph 115V, High Cap | 1 | G0142 |
| | Motor, .75hp 3ph 230V, High Cap | | G0144 |
| | Motor, .75hp 3ph 440V, High Cap | | G0148 |
| 13 | Pulley, 1-3/4 x 5/8", Standard | 1 | J0290 |
| 14 | Pulley, 2-1/4 x 5/8", High Cap | 1 | J0299 |
| 15 | Key, 3/16 x 3/16 x 1" | 1 | G0150 |
| 16 | Bolt, 5/16 - 18 x 1" | 2 | J0527 |
| 17 | Split lock washer, 5/16" | 10 | J1002 |
| 18 | Nut, 5/16" – 18 | 10 | J0527 |
| 19 | Pulley, 16" cast | 1 | G0116 |
| 20 | Locking bolt, 5/16 - 18-20 x 1" | 2 | J0527 |
| 21 | Nut, 5/16" – 18 | 2 | J1002 |
| 22 | Hairpin clip | 2 | J5410 |
| 23 | Main bearing tube | 1 | G0161 |
| 24 | Pan pitch adjusting rod | 1 | G0121 |
| 25 | Pitch control arm | 2 | G0123 |
| 26 | Cotter pin, 1/8" x 1-1/2" | 5 | J1421 |
| 27 | Center flow control | 2 | G0149-04 |
| 28 | Spreading vane | 2 | G0149-03 |
| 29 | Hinged spreader pan assy. | 2 | G01661 |
| 30 | Hinged pan pin | 1 | G0122 |
| 31 | Belt, A56, Standard | 1 | J0235 |
| | Belt, BX57, High Cap | 1 | J0236 |
| 32 | Carriage bolt, 5/16 - 18 x 1" | 8 | J0535 |
| 33 | 3-hole flangette | 4 | J0098 |
| 34 | Flat washer, 5/16" | 2 | J1111 |
| 35 | Screw, 5/16 - 18 x 3/4" | 1 | J0520 |
| 36 | Lock nut, 5/16" - 18 | 1 | J1003 |
| 37 | Bottom bearing cover | 1 | G0164 |
| 38 | Top bearing cover | 1 | G0163 |

Super High Capacity Spredway – Galvanized (G0250)



SWSP0010
03/19/2008 THW

Super High Capacity Spreadway – Galvanized G0250, Parts List

| REF. # | DESCRIPTION | QTY. | PART # |
|--------|---|------|----------|
| 1 | Locking handle, 1/2 x 5-1/2" | 1 | G0112 |
| 2 | Pre-spread disc | 1 | G0113 |
| 3 | Flat pulley, 16" | 1 | G0116 |
| 4 | Pan pitch adjusting rod | 1 | G0121 |
| 5 | Pan hinge pin | 1 | G0122 |
| 6 | Stationary pitch control arm | 2 | G0123 |
| 7 | Center fill door | 2 | G0149-04 |
| 8 | Square key, 3/16 x 1" | 1 | G0150 |
| 9 | Galvanized belt catcher | 1 | G0153 |
| 10 | Main bearing hinged tube shaft | 1 | G0161 |
| 11 | Motor mount | 1 | G0262 |
| 12 | Motor mount pivot pin | 1 | G0265 |
| 13 | Spreading vane | 2 | G0266 |
| 14 | Motor, 1.5hp, 1ph, 230V | 1 | G0272 |
| | Motor, 1.5hp, 3ph, 230V | 1 | G0273 |
| | Motor, 1.5hp, 3ph, 460V | 1 | G0274 |
| 15 | Spreader cone | 1 | G02921 |
| 16 | Center bracket | 3 | G02922 |
| 17 | Motor mount bracket | 1 | G02923 |
| 18 | Pre-spread ring, Super-High | 1 | G02924 |
| 19 | Hinged spreader pan assy. | 2 | G0299 |
| 20 | 1" center bearing, FH205-16, ag seal w/ lock collar | 2 | J00058 |
| 21 | 1" lock collar | 2 | J0067 |
| 22 | 3-hole flange for 205 bearing | 4 | J0098 |
| 23 | Belt, BX57 | 1 | J0236 |
| 24 | Pulley, 2-1/4" OD, 5/8", single, B groove | 1 | J0299 |
| 25 | Screw, 5/16 - 18 x 3/4" | 1 | J0520 |
| 26 | Screw, 5/16 - 18 x 1" | 4 | J0527 |
| 27 | Carriage bolt, 5/16 – 18 x 1" | 8 | J0535 |
| 28 | Hex nut, 5/16" – 18 | 12 | J1002 |
| 29 | Nylon lock nut, 5/16" – 18 | 1 | J1003 |
| 30 | Flat washer, 5/16" | 2 | J1111 |
| 31 | Flat washer, 1/2" | 1 | J1125 |
| 32 | Split lock washer, 5/16 | 10 | J1200 |
| 33 | Cotter pin, 1/8 x 1-1/2" | 5 | J1421 |
| 34 | Double torsion spring | 1 | J2371 |
| 35 | Hairpin clip, .09 x 2" | 5 | J5410 |
| 36 | Bottom bearing cover | 1 | G0164 |
| 37 | Top bearing cover | 1 | G0163 |

CONTACT INFORMATION

Sukup Dealer Information

| | |
|---------------|-------|
| Dealer name: | _____ |
| Address: | _____ |
| Cell phone: | _____ |
| Office phone: | _____ |
| Fax: | _____ |

In Case of Emergency

Have emergency numbers and written directions to your location near a phone.
Arrange and practice a safety plan.

| | |
|---|-------|
| Ambulance • Fire • Police: 9-1-1 | |
| Bin rescue team: | _____ |
| Local EMS team: | _____ |
| 911 Address of work site: | _____ |
| Directions to work site: | _____ |
| | _____ |

PRODUCT WARRANTY REGISTRATION

Please scan QR code or follow the link
<https://www.sukup.com/resources/warranty-registration>
to register online.



Sukup Manufacturing Co.
1555 255th Street, Box 677
Sheffield, Iowa, USA 50475-0677
Phone: 641-892-4222 Fax: 641-892-4629
Website: www.sukup.com E-mail: info@sukup.com